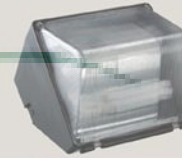
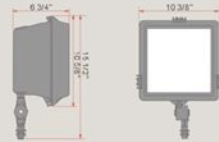
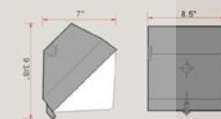




Dimensions



Dimensions



BFM-218E

Features

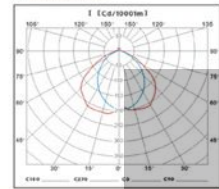
Optics--Three piece anodized aluminum reflector for wide beam distribution.
 One-piece high impact tempered lens glass.
 Mounting--Supplied with 1/2 inch threaded knuckle, for wall mounted applications. Rated for above and below horizontal aiming.

* All items share same data of the Housing, Ballast, Lamp, Socket and UL Listings.

Catalogue Number	Voltage	Watts Lamp Type	Ballast	Shipping Weight
BFM-218E	120volt	PL-C/ 4P18W/G24Q-2	GT12218PLB	11lbs

* Photocell option available for field installed.

Photometrics



BWS-218E

Features

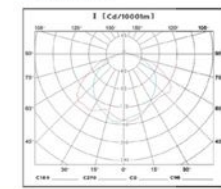
Optics--One-piece semi specular asymmetric anodized aluminum reflector with multi patterned, UV stabilized, injection molded prismatic polycarbonate lens.
 Mounting--Removable threaded knockouts 1/2 inch NPS on each side for attaching conduit fittings. Mounting plate also supplied for attachment to standard 4" junction box.

* All items share same data of the Housing, Ballast, Lamp, Socket and UL Listings.

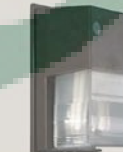
Catalogue Number	Voltage	Watts Lamp Type	Ballast	Shipping Weight
BWS-218E	120volt	PL-C/ 4P18W/G24Q-2	GT12218PLB	7lbs

* Photocell option available for field installed.

Photometrics



Dimensions



Dimensions



BFS-218E

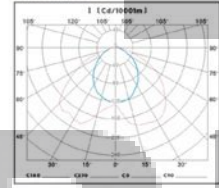
Features

Optics--One piece anodized aluminum reflector. One-piece high impact tempered lens glass.
 Mounting--Supplied with 1/2 inch threaded knuckle, for wall mounted applications. Rated for above and below horizontal aiming.

* All items share same data of the Housing, Ballast, Lamp, Socket and UL Listings.

Catalogue Number	Voltage	Watts Lamp Type	Ballast	Shipping Weight
BFS-218E	120volt	PL-C/ 4P18W/G24Q-2	GT12218PLB	6lbs

Photometrics



BWC-218E-PC

Features

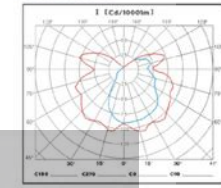
Optics--Front cover is injection molded UV stabilized, prismatic, polycarbonate providing for efficient light distribution. One piece aluminum reflector. Design provides for side distribution of light.
 Mounting--Surface mount installs over standard 4"ough in junction box.

* All items share same data of the Housing, Ballast, Lamp, Socket and UL Listings.

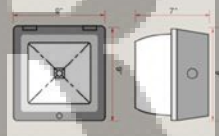
Catalogue Number	Voltage	Watts Lamp Type	Ballast	Shipping Weight
BWC-218E-PC	120volt	PL-C/ 4P18W/G24Q-2	GT12218PLB	6lbs

* Photocell pre-installed.

Photometrics



Dimensions



BV8-218E

Features

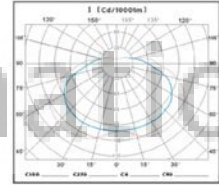
Optics--one-piece clear prismatic polycarbonate UV stabilized diffuser.
 Mounting--Three removable threaded knockouts 1/2 inch NPS, on each side and one located on the back, providing access for conduit fittings or photo control. Can be wall-mounted or ceiling mounted.

* All items share same data of the Housing, Ballast, Lamp, Socket and UL Listings.

Catalogue Number	Voltage	Watts Lamp Type	Ballast	Shipping Weight
BV8-218E	120volt	PL-C/ 4P18W/G24Q-2	GT12218PLB	7lbs

* Photocell option available for field installed.

Photometrics



* Housing--Die cast aluminum housing and lens frame. Standard finish, bronze, fade resistant powder coat paint. Housing is gasketed and lens is silicone sealed.

* Ballast--2x18W compact fluorescent lamp, 120volt, normal power factor; Minimum starting temperature -15°C, UL935 listed, Two-year Warranty.

* Lamp--PL-C/ 4P18W / G24Q-2

* Socket--Bakelite lamp holder, C24q-2 base UL Listed.

* Listings--UL1598 listed suitable for wet location. CUL certified for use in Canada.

